

# DIN A - Serie TBA

## terminal block

### MATERIAL OF BASE

Steatite

### MATERIAL OF TERMINALS

Nickel-plated brass

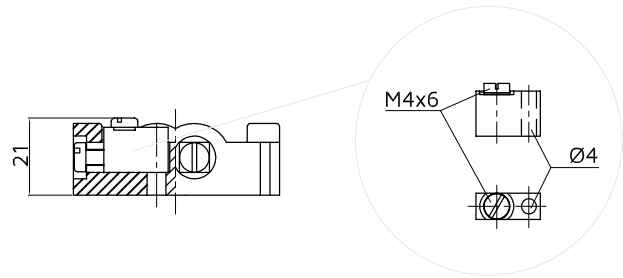
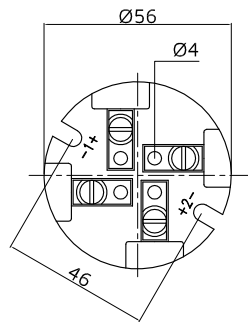
### FIXING DISTANCE

46 mm

	a		b		
ARTICLE + WIRE CONNECTIONS	CHOOSE No. PINS		EXAMPLE OF ORDERING CODE		MOUNTING BY
TBA100-A0	2	4	TBA100-A02		screws
TBA200-B0	2	4	TBA200-B02		
TBA300-B0	2	4	TBA300-B02		



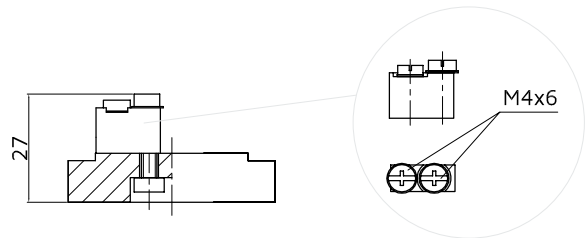
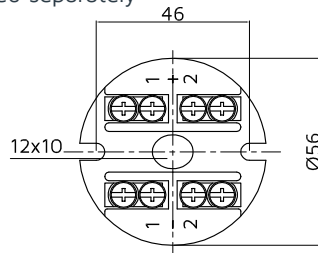
TBA100-A0



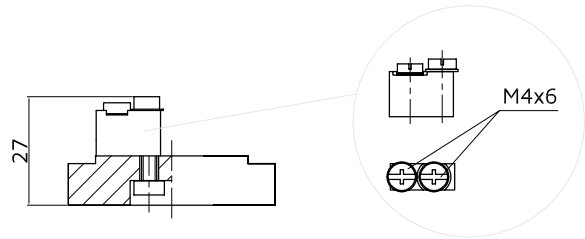
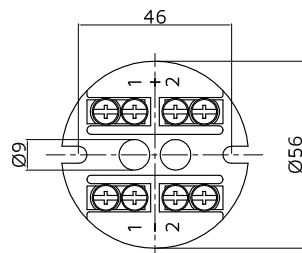
metallic clip to be ordered separately



TBA200-B0



TBA300-B0



# DIN A - Serie TBA

## terminal block

COMPONENTS FOR INDUSTRY  
THERMOMETRICAL LINE



### MATERIAL OF BASE

Porcelain

### MATERIAL OF TERMINALS

Nickel-plated brass

### FIXING DISTANCE

41 mm

a	b				EXAMPLE OF ORDERING CODE	MOUNTING BY
ARTICLE + WIRE CONNECTIONS	CHOOSE No. PINS					
TBA400-GA	2	3	4	6	TBA400-GA2	screws



TBA400-GA

